



Connecting Communities Collaboration/Addition

Symons Recreation Complex and the UW Platteville-Richland Gymnasium

April 2019

Project Outline:

A proposed \$2,000,000 building collaboration will connect Symons Recreation Complex (SRC) with the UW Platteville/Richland (UWP/R) gymnasium to address the growing needs of the community. The new addition will connect and expand the reach of SRC by fostering cooperation of recreation resources.

A 5,300 square foot “connecting building” will make SRC and the UWP/R gym accessible to all patrons, but will especially benefit our disabled visitors, older adults and families with young children.

Overall, the construction of the new space will allow the Symons Recreation Complex to continue its mission to educate, encourage, and support the changing recreational and fitness needs of the individual, family, and community, while promoting the benefits of recreation, wellness, and socialization in Southwest Wisconsin. The collaboration will benefit the UWP/Richland students by increasing access to the gymnasium and to new recreational opportunities.

Project Specifics:

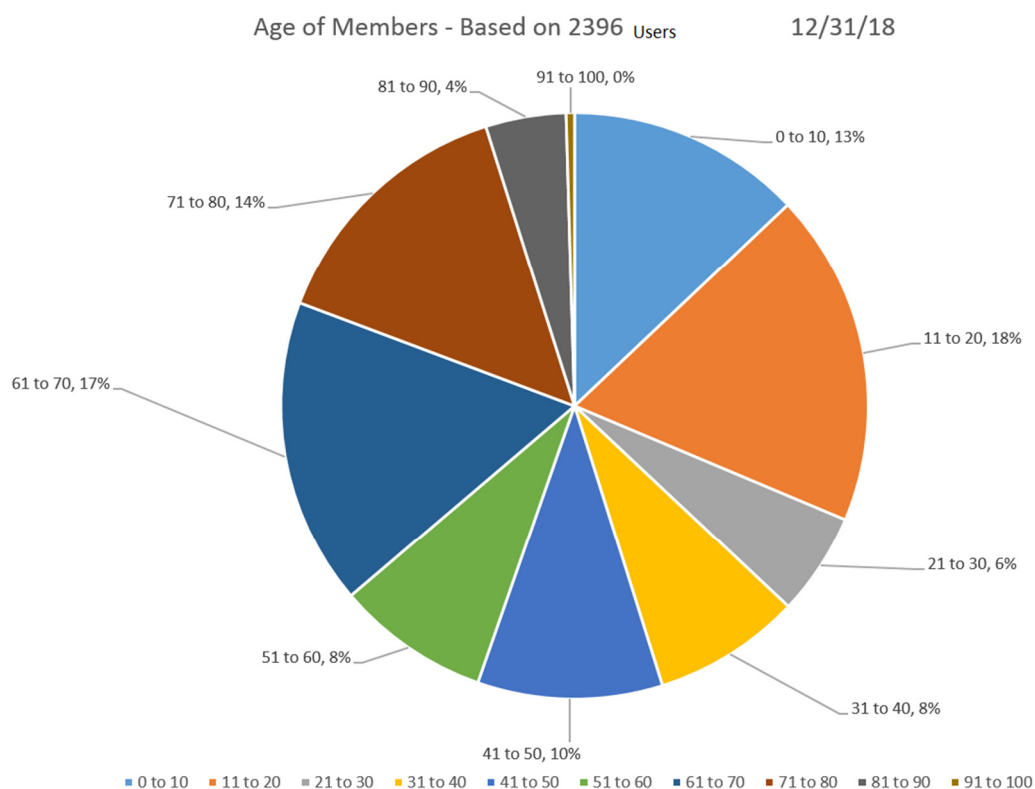
- The new 5,300 square foot “connecting addition” will create:
 - a new SRC lobby/reception area
 - Multi-use exercise/class rooms
 - child play/exercise area
 - office areas
 - an ADA (Americans with Disabilities Act) entrance to the UWP/R Gymnasium
- Updates to the existing SRC will include:
 - The creation of an ADA family changing locker room in the existing SRC lobby
 - Updates to the pool/hot tub filtration, HVAC and mechanical systems.
 - Energy efficient water and lighting upgrades.
- Updates to the UWP/R gym will include:
 - exterior tuck pointing,
 - updating heating/cooling systems,
 - updating locker room space
 - installation of security cameras

- The new addition along with the collaborated access to the UWP/R gymnasium, will provide space for SRC to offer new activities such as after-school programming, basketball, volleyball and pickle ball leagues, and an area for indoor walking/running.
- Collaboration will occur between UWP/R and SRC for shared use of the Gymnasium.
- SRC will be responsible for the building/ staffing costs to maintain the new “connecting addition.”
- Maintenance and the upkeep of the UWP/R Gymnasium will continue with the County of Richland and UWP/R.
- With increased number of visitors to the facility from outside of City of Richland Center and County of Richland boundaries, SRC will continue to be an economic driver for the community.

History

SRC is a successful collaboration between the City of Richland Center, the County of Richland and the State of Wisconsin through the UWP/R Campus. It was built in 1987 through a donation from John and Edith Symons. The original purpose of SRC was to attract students to enroll at UWP/R, while providing recreation, social and exercise opportunities to the residents of Southwest Wisconsin. A building addition to SRC was completed in 1998, which expanded the size of the exercise room. In 2004, with space at a premium, a plan was again developed to add onto the facility. Due to the cost (\$3,000,000) the plan did not move forward. Instead existing walls were removed (closet became an office) to use all available space for programming.

Over the past 32 years, over 40,000 people have taken part in multi-generational programming that has improved the quality of lives in our rural community. Over the past 10 years, SRC has averaged over 94,523 visits per year. As can be seen by the chart, SRC is a multi-generation facility. (*The definition of Member below, is a person who has purchased a monthly or yearly membership. Visitors who purchase daily passes are not defined as members*)



The age group of users aged 61-100 combine for 35% of total SRC membership. Participation in exercise programs has been proven to keep older adults healthier and living in their own home longer. Consequently, SRC older adults have a better quality of life and their entrance into assisted living facilities or nursing homes is delayed or possibly eliminated. SRC is helping create a healthy community for all ages.

To continue to meet the needs of the older user, SRC is working with the ADRC (Aging and Disability Resource Center) in Richland, Grant and Vernon counties to offer older adult programming in outlying local communities. Currently, classes are taught in Viola, Muscoda and Richland Center.

- SRC is open to the public year round, 7 days a week. The facility offers a twenty-five yard indoor pool, whirlpool, sauna, two racquetball courts, two exercise rooms and locker rooms. SRC offers swimming lessons, open/lap swim times, swim teams, water exercise classes and land based exercise classes.
- The Symons Recreation Complex Foundation was established in 2004 as a 501 © (3) organization to seek support for SRC. Projects recently completed by the Foundation include- installation of solar panels, installation of ultraviolet lights for the pool/hot tub and completion of an outdoor patio.
- **Operational Funding** The majority of the funding for operations at SRC is generated through user fees. In 2017, user fees supported 86% of the operating costs. The City of Richland Center and the County of Richland, jointly share the remaining costs through the tax levy. One goal of the proposed addition/collaboration is to further decrease the tax levy, by increasing usage/revenue and by implementing sustainable energy practices to decrease utility fees.

The UWP/ R Gymnasium was built in 1967, with no significant updates to the original building. The facility includes a garage, maintenance shop, weight room, and gymnasium, locker rooms, and support spaces.

- In April of 2013, the University of Wisconsin-Richland (*name was changed in 2017*) commissioned a long range *Facilities Master Plan* encompassing the entire campus. This plan addressed updates, remodeling, and a building addition to the gymnasium. While this plan has not be implemented, the results from the study are being used as a guide to in the proposed addition/collaboration.
- **Operational Funding** The UWP/R gymnasium facility is owned by the County of Richland. The staffing and utilities are supported by UW Platteville/Richland. The same financial structure will continue, when the project is completed.

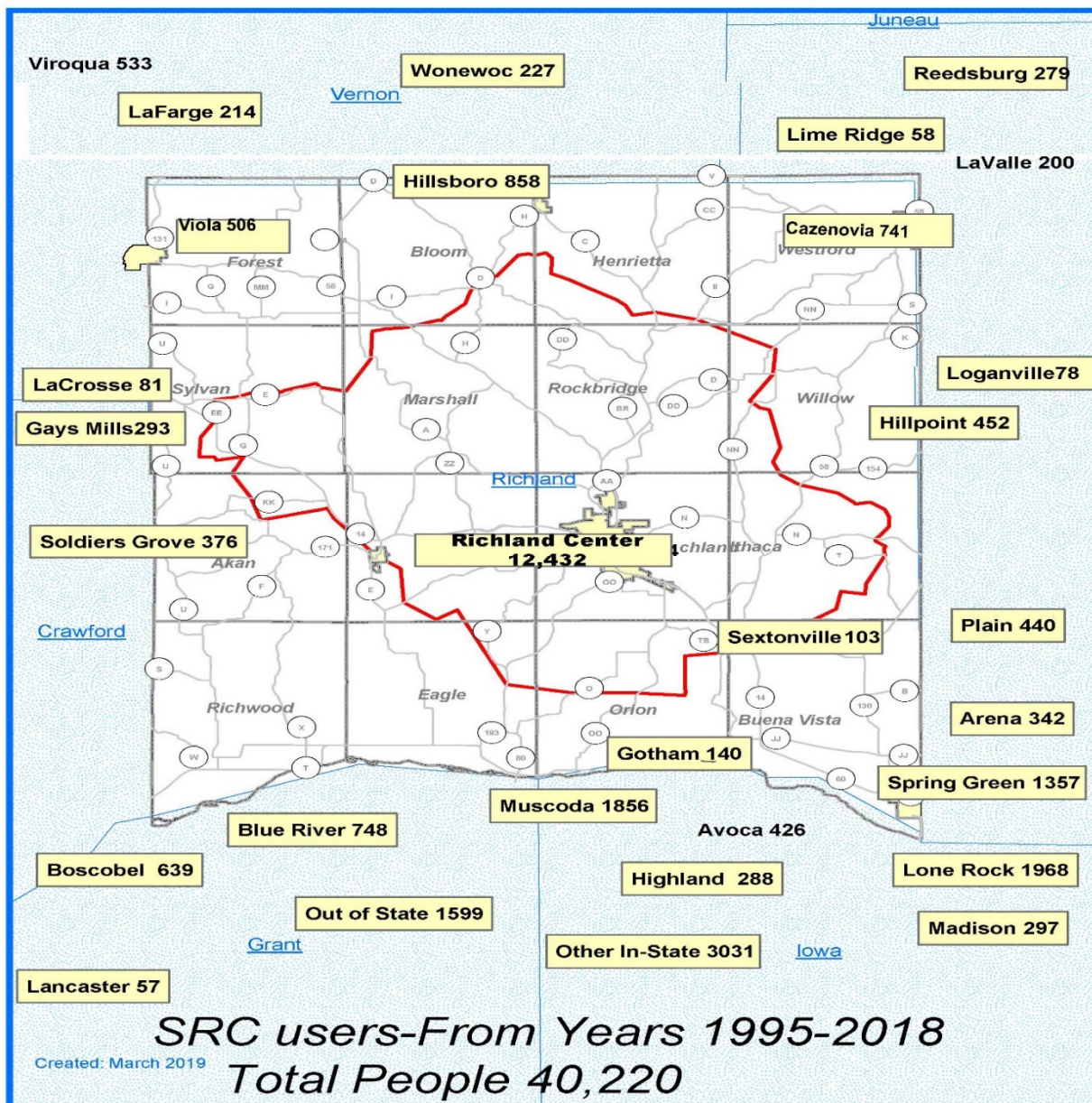
STATISTICS

Symons Recreation Complex Since 1987, over 40,220 people have used the facility. *This is nearly three times the entire population of Richland County.* SRC is recreational facility that attracts users throughout the entire Southwest Wisconsin region. While approximately 50% of SRC users are from Richland County, regular users also come from adjacent Sauk, Vernon, Iowa, and Grant counties. SRC has the only public indoor swimming pool/ recreation facility in a one-hour radius (50 miles) of Richland Center.

UWP/R -With the current enrollment at the campus, recruitment of new students is critical. A 2014 national survey of 35,000 college students highlighted the importance of a college recreation facility for recruiting and retaining students (Forrester, S. The Benefits of Campus Recreation. Corvallis, OR: NIRSA 2014).

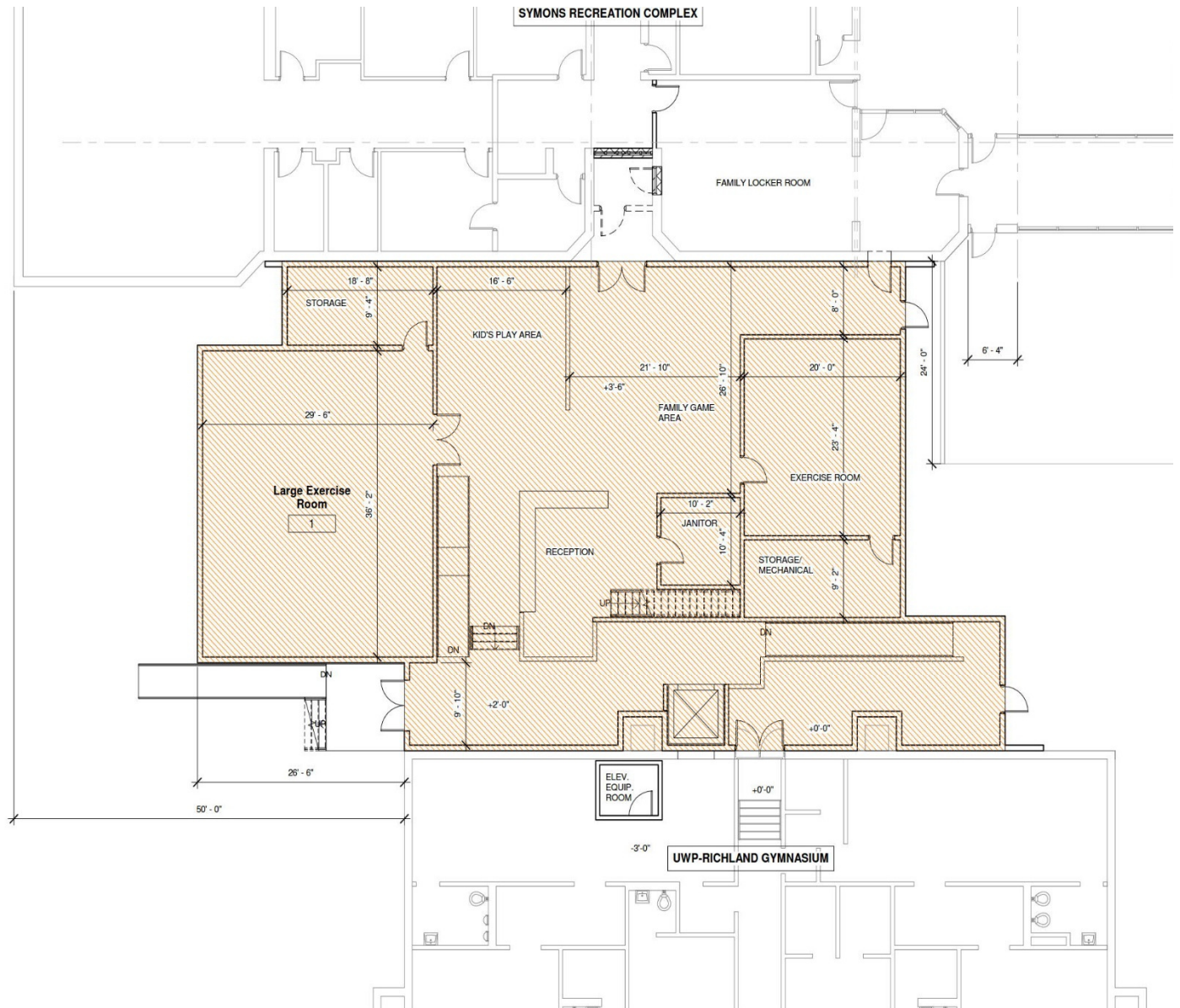
- 68% of students reported that campus recreation facilities influenced their decision of which college/university to attend.
- 74% of students report that campus recreation facilities influenced their decisions to continue attending their chosen college/university.

The following map identifies usage by zip codes for visitors to the SRC.



Preliminary Drawing

The following is a preliminary drawing of the proposed addition/collaboration.



The proposed renovations will create a partnership between SRC and UWP/R that will benefit UWP/R, SRC users and the local Southwest Wisconsin community.

For More information, please contact:

Denise Lins, Director
Symons Recreation Complex
608.647.8522
denise@symonsrec.com

Brandon Fetterly, Interim Dean
University of Wisconsin Platteville/ Richland
608-647-6186
Brandon.fetterly@uwc.edu